

NOTES

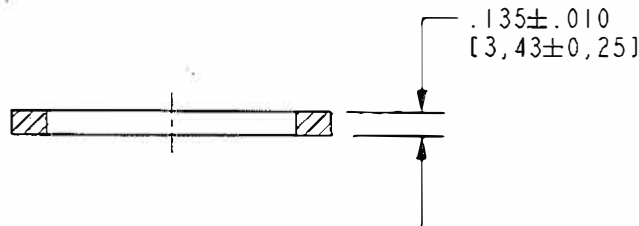
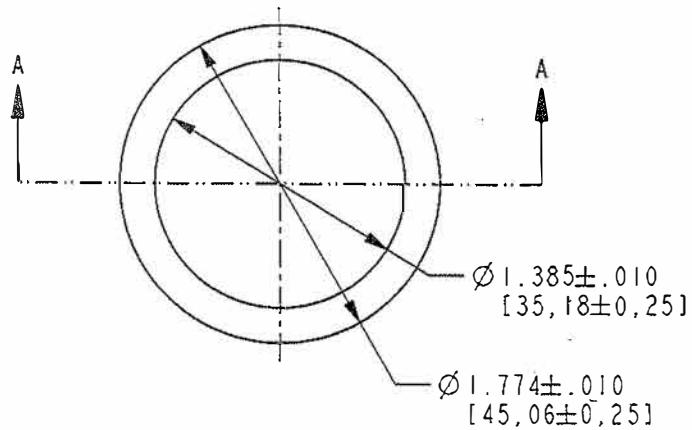
- 1) MINIMUM RECOMMENDED CAP TORQUE: 50 in-lb
- 2) REFERENCE DRAWING 18005326 FOR COMPLETE THREAD FINISH INFO.
- 3) REFERENCE DRAWING 28000975 FOR COMPLETE CLOSURE INFO.

BREAK ALL SHARP EDGES WITH 1/64" RADIUS, UNLESS OTHERWISE SPECIFIED	DATE	DRAWN BY
THE FOLLOWING TOLERANCES APPLY UNLESS OTHERWISE SPECIFIED:	31-OCT-00	TPK
ANGLES ± 1/4°	SCALE	CHECKED
HUNDREDTH ± .015	FULL	RDR
THOUSANDTH ± .005		APPROVED
		A

H	HI: REMOVE LOGO AND ADD Ø 1.90 REF	10-Oct-02	TPK
G	G1: REVISE 'H' NOTE AND MEASUREMENT POSITIONS; G2: .630 WAS .635	25-Sep-02	TPK
F	F1: ADD LOGO; F2: 50 WAS 55; F3: .650 WAS .670 AND ADD .635 MINIMUM; F4: REMOVE TABLE	25-Jul-02	TPK
E	E1: GK094W-03 WAS GK094W-02	13-Jun-02	TPK
D	D1: WAS GK094W-01	28-Feb-02	TPK
C	C1: .28 MINIMUM WAS .30	12-Jul-01	RDR
B	B1: 28001006 WAS 28000944; B2: REMOVE TOL AND ADD 'MIN'; B3: Ø: .470 WAS Ø: 1.500; B4: ADD NOTE	09-Apr-01	TPK
A	A1: .650 ± .015 WAS .650	26-Feb-01	TPK
CHANGE NUMBER	CHANGE	DATE	BY

CUSTOMER DRAWING	
RiceKor® Corporation — Auburn, Indiana	
DETAIL NAME	50mm SCREW CAP
TOOL ASS'Y NAME	
PRODUCT	SC-550
DRAWING NUMBER	28000976
FOR	AUBURN
MATERIAL	TEMPER
DETAIL NUMBER	SC-550

PRO/E



MATERIAL: EPDM (FDA REQUIRED)  
 COLOR: WHITE  
 HAARDNESS: 45 ± 5 SHORE A (B1)  
 PEROXIDE CURE ONLY!

PRO/E

**CUSTOMER DRAWING**

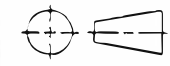
**Rieke**® Corporation — Auburn, Indiana

DETAIL NAME GASKET FOR 50MM SCREW CAP

TOOL ASS'Y NAME

PRODUCT SC-550

DRAWING NUMBER 28001006



FOR

DETAIL NUMBER (B2)

MATERIAL EPDM WHITE TEMPER

GK094W-03

BREAK ALL SHARP EDGES WITH 1/64" RADIUS, UNLESS OTHERWISE SPECIFIED	DATE	DRAWN BY					
	20-Feb-01	TPK					
THE FOLLOWING TOLERANCES APPLY UNLESS OTHERWISE SPECIFIED:	SCALE	CHECKED					
		JLH	B	B1: 45 WAS 50, B2: GK094W-03. WAS GK094W-02	13-Jun-02	TPK	
ANGLES	± 1/4°	APPROVED	A	A1: WAS GK094W-01	26-Apr-01	TPK	
HUNDREDTH	± .010	CHANGE NUMBER		CHANGE	DATE	BY	
THOUSANDTH	± .005						

FULL